

## TRANSITION PIECES

Transition pieces are fittings that connect two connection fittings with each other or seal one connection fitting against the environment. A distinction is made in detail:

Double nipple - with identical male thread on both sides

Reduction nipple - with unequal external threads,

Reducers - with a female thread on one side and a male thread on the other

Sockets - with the same internal thread on both sides

Reducing sleeves - with unequal internal threads

Weld-on nipple - with a weld-on end on one side and a male thread on the other

Flange threaded nipple - with a fixed flange on one side and a male thread on the other side

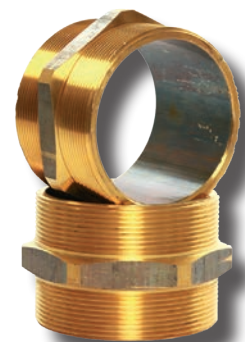
Blanking plug - a closure with external thread

Dummy caps - a closure with internal thread

### Double nipple

Same external thread on both sides.

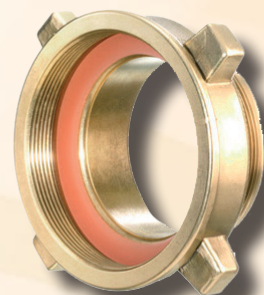
Article Number	Thread	Material	Weight (kg/piece)
	G 1/2"	Brass	0,05
		Stainless steel	0,05
	G 3/4"	Brass	0,08
		Stainless steel	0,07
	G 1"	Brass	0,13
		Stainless steel	0,13
	G 1 1/4"	Brass	0,16
		Stainless steel	0,16
	G 1 1/2"	Brass	0,21
		Stainless steel	0,25
	G 2"	Brass	0,39
		Stainless steel	0,33
		Aluminium	0,10
	G 2 1/2"	Brass	0,77
		Stainless steel	0,55
		Aluminium	0,12
	G 3"	Brass	0,67
		Stainless steel	0,62
		Aluminium	0,20
	G 4"	Brass	1,70
		Stainless steel	1,05
		Aluminium	0,34
	5 1/2"DIN 11	Brass	5,15
		Aluminium	1,80



## Reducer

With unequal external threads.

Articl Number	Thread, inside...outside		Material	Weight (kg/ piece)
	G 1/2"	G 1/2"	Brass	0,06
		G 3/4"	Brass	0,11
			Stainless steel	0,10
	G 3/4"	G 3/4"	Brass	0,07
		G 1"	Brass	0,13
			Stainless steel	0,14
	G 1"	G 3/4"	Brass	0,09
			Stainless steel	0,09
		G 1"	Brass	0,08
		1"NPT	Brass	0,11
		G 1 1/4"	Brass	0,15
			Stainless steel	0,14
		G 1 1/2"	Brass	0,23
			Stainless steel	0,21
		G 2"	Brass	0,24
			Stainless steel	0,32
	1"NPT	G 1"	Brass	0,15
	G 1 1/4"	G 1"	Brass	0,14
			Stainless steel	0,13
		G 1 1/4"	Brass	0,15
		G 1 1/2"	Brass	0,24
			Stainless steel	0,22
		G 2"	Brass	0,31
			Stainless steel	0,27
	G 1 1/2"	G 1"	Brass	0,25
			Stainless steel	0,23
		G 1 1/4"	Brass	0,23
			Stainless steel	0,22
		G 1 1/2"	Brass	0,25
		G 2"	Brass	0,27
			Stainless steel	0,21
	G 2"	G 1"	Brass	0,30
			Stainless steel	0,27
		G 1 1/4"	Brass	0,32
			Stainless steel	0,25
		G 1 1/2"	Brass	0,35
			Stainless steel	0,26
		G 2"	Brass	0,37
		2"NPT	Brass	0,52
		G 2 1/2"	Brass	0,52
			Stainless steel	0,40
		G 3"	Brass	0,41
			Stainless steel	0,63
	2"NPT	G 2"	Brass	0,39
	G 2 1/2"	G 2"	Brass	0,53



Artikel-Article Number.	Thread, inside...outside		Material	Weight (kg/piece)
	G 2 1/2"	G 2"	Stainless steel	0,44
		G 2 1/2"	Brass	0,64
		G 3"	Brass	0,48
			Stainless steel	0,50
	G 3"	G 2"	Brass	0,85
			Stainless steel	0,53
		G 2 1/2"	Brass	0,82
			Stainless steel	0,56
		G 3"	Brass	0,78
		3"NPT	Brass	0,87
		G 4"	Brass	0,98
			Stainless steel	1,05
		5 1/2"DIN 11	Brass	2,50
			Stainless steel	3,40
			Aluminium	0,89
	3"NPT	G 3"	Brass	0,96
	G 4"	G 3"	Brass	0,93
			Stainless steel	1,15
		G 4"	Brass	1,60
		4"NPT	Brass	1,35
		5 1/2"DIN 11	Brass	3,55
			Stainless steel	2,95
			Aluminium	1,45
	4"NPT	G 4"	Brass	1,55
	5 1/2"DIN 11	G 2"	Brass	2,90
			Stainless steel	2,60
		G 3"	Brass	2,95
			Stainless steel	2,55
			Aluminium	0,96
		G 4"	Brass	2,85
			Stainless steel	2,40
			Aluminium	0,97

## Reducing sleeves

With unequal internal threads.

Article Number	Thread, inside...outside.		Material	Weight (kg/piece)
710.100150.113	G 1"	G 1 1/2"	Messing	0,27
710.100200.113		G 2"	Messing	0,38
710.125150.113	G 1 1/4"	G 1 1/2"	Messing	0,37
710.125200.113		G 2"	Messing	0,45
710.150200.113	G 1 1/2"	G 2"	Messing	0,38
710.150250.113		G 2 1/2"	Messing	0,49
710.200250.113	G 2"	G 2 1/2"	Messing	0,63
710.200300.113		G 3"	Messing	0,63
710.250300.113	G 2 1/2"	G 3"	Messing	0,72
710.300400.113	G 3"	G 4"	Messing	1,55



## Reduction nipple

With unequal external threads.

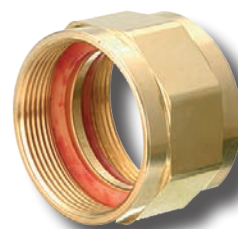
Article Number	Thread, inside...outside		Material	Weight (kg/ piece)
	G 1/2"	G 3/4"	Brass	0,09
			Stainless steel	0,08
	G 3/4"	G 1"	Brass	0,14
			Stainless steel	0,13
	G 1"	M 38 x 1,5	Brass	0,16
		G 1 1/4"	Brass	0,22
			Stainless steel	0,20
		G 1 1/2"	Brass	0,22
			Stainless steel	0,25
		G 2"	Brass	0,31
			Stainless steel	0,47
	G 1 1/4"	M 45 x 1,5	Brass	0,22
		G 1 1/2"	Brass	0,24
			Stainless steel	0,22
		G 2"	Brass	0,34
			Stainless steel	0,41
	G 1 1/2"	M 52 x 1,5	Brass	0,30
		G 2"	Brass	0,32
			Stainless steel	0,35
	G 2"	M 65 x 1,5	Brass	0,57
		G 2 1/2"	Brass	0,62
			Stainless steel	0,69
		G 3"	Brass	0,66
			Stainless steel	0,72
			Aluminium	0,17
	G 2 1/2"	M 78 x 2	Brass	0,49
		G 3"	Brass	0,85
			Stainless steel	0,59
	G 3"	M 90 x 2	Brass	0,77
		G 4"	Brass	0,79
			Stainless steel	1,05
			Aluminium	0,27
		5 1/2"DIN 11	Brass	2,90
			Stainless steel	3,75
			Aluminium	1,00
	G 4"	5 1/2"DIN 11	Brass	4,45
			Stainless steel	2,95
			Aluminium	1,35



## Sleeves

Same internal thread on both sides.

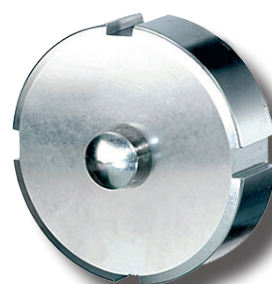
Article Number	Thread	Material	Weight (kg/ piece)
700.100100.130	G 1"	Messing	0,11
700.125125.130	G 1 1/4"	Messing	0,17
700.150150.130	G 1 1/2"	Messing	0,28
700.200200.130	G 2"	Messing	0,35
700.250250.130	G 2 1/2"	Messing	0,70
700.300300.130	G 3"	Messing	0,65
700.400400.130	G 4"	Messing	1,55



## Blanking caps

One side internal thread, other side knob for chain.

Article Number	Thread	Material	Weight (kg/ piece)
	G 1/2"	Brass	0,02
		Stainless steel	0,04
	G 3/4"	Brass	0,02
		Stainless steel	0,05
	G 1"	Brass	0,04
		Stainless steel	0,07
	G 1 1/4"	Brass	0,14
		Stainless steel	0,10
	G 1 1/2"	Brass	0,19
		Stainless steel	0,18
	G 2"	Brass	0,30
		Stainless steel	0,36
	G 2 1/2"	Brass	0,24
		Stainless steel	0,49
	G 3"	Brass	0,51
		Stainless steel	0,73
	G 4"	Brass	1,05
		Stainless steel	1,20
	5 1/2"DIN 11	Brass	2,50
		Stainless steel	2,50
		Aluminium	0,81



## Dummy plug

External thread on one side, knob for chain on the other.

Article Number	Thread	Material	Weight (kg/ piece)
	G 1"	Messing	
	G 1 1/4"	Messing	
	G 1 1/2"	Messing	
	G 2"	Messing	
	G 2 1/2"	Messing	
	G 3"	Messing	
	5 1/2"DIN 11	Messing	
		Aluminium	



## Weld-on nipple

Male thread on one side, welding end on the other

Article Number	Thread	Dimensions (mm) D x d x L *	Material	Weight (kg/ piece)
	R 1/2"2999	21 x 13 x 35	Steel	0,06
			Stainless steel	0,06
			Aluminium	0,02
	1/2"NPT	21 x 13 x 35	Steel	0,06
	R 3/4"2999	27 x 18 x 35	Steel	0,07
			Stainless steel	0,07
			Aluminium	0,03
	3/4"NPT	27 x 18 x 35	Steel	0,08
	G 1"	33 x 23 x 35	Steel	0,12
			Stainless steel	0,12
			Aluminium	0,04
	1"NPT	33 x 23 x 35	Steel	0,13
	G 1 1/4"	42 x 32 x 35	Steel	0,14
			Stainless steel	0,14
			Aluminium	0,05
	1 1/4"NPT	42 x 32 x 45	Steel	0,18
	G 1 1/2"	48 x 38 x 35	Steel	0,18
			Stainless steel	0,18
			Aluminium	0,06
	1 1/2"NPT	48 x 38 x 45	Steel	0,26
	G 2"	60 x 48 x 45	Steel	0,32
			Stainless steel	0,32
			Aluminium	0,11
	2" NPT	60 x 48 x 45	Steel	0,33
	G 2 1/2"	75 x 63 x 45	Steel	0,41
			Stainless steel	0,41
			Aluminium	0,12
	2 1/2"NPT	75 x 63 x 60	Steel	0,46
	G 3"	89 x 75 x 45	Steel	0,50
			Stainless steel	0,55
			Aluminium	0,21
	3"NPT	89 x 75 x 60	Steel	0,71
	G 4"	114 x 100 x 45	Steel	0,72
			Stainless steel	0,52
			Aluminium	0,31
	4"NPT	114 x 100 x 60	Steel	0,93
	5 1/2"DIN 11	140 x 122 x 60	Steel	1,60
		140 x 100 x 45	Stainless steel	2,05
	G 5"	140 x 122 x 60	Steel	1,20
	5"NPT	142 x 127 x 60	Steel	1,15
	G 6"	165 x 147 x 60	Steel	1,65
	6"NPT	168 x 150 x 60	Steel	2,05

